

Agricultural

PROFESSIONAL GRADE FEATURES



HEAVY DUTY SOLID SPUN DISCS WITH ROLLED EDGES - not stamped, made with first of its kind CNC robotic spinning cell

LOW PROFILE RISER & OPEN DRUM SLOT for smooth, even hose wraps

ZINC PLATED PLUMBING for applications requiring superior oxidation prevention
Only on 1/2" 1125 Series

INDUSTRIAL GRADE BRASS, machined from solid, full flow swivel with external fluid path for ease of seal maintenance

PERMANENTLY SEALED PILLOW BLOCK BEARINGS for smooth rotation

ONE PIECE ALL CNC ROBOTICALLY WELDED steel "A" frame construction

MOTORIZED VERSIONS:
The electric version features all of the same features found on the hand crank model plus **SOLID STEEL HALO** is welded to the disc for a direct gear driven motor



POSSIBLE FIELDS OF APPLICATION

- Farming
- General Landscape
- Washdown
- High-Flow Watering
- Hydro Seeding
- Agricultural Spraying
- Home Gardening
- Golf Course Maintenance
- Turf Care



www.coxreels.com

800.COX.REEL

P: 480.820.6396

F: 480.820.5132

E: info@coxreels.com



1125 SERIES

- External fluid path with machined from solid brass 90° full-flow NPT swivel inlet (Nickel plated steel swivel on 1" models)
- Swivel Seals: NITRILE (AFLAS on 1" models)
- Exclusive low profile outlet riser & open drum slot design for flat smooth hose wrap
- All welded steel "A" frame construction for superior reel structure

MODEL	MOTOR OPTION	I.D.	FT.	PSI	APRX. LBS.	W x H x L
1125-4-100	Electric Motor Options Available	1/2"	100	3,000	36	19 1/2 x 18 3/4 x 17 5/8"
1125-4-200		1/2"	200	3,000	39	25 1/2 x 18 3/4 x 17 5/8"
1125-4-325		1/2"	325	3,000	48	31 1/2 x 18 3/4 x 17 5/8"
1125-4-500		1/2"	500	3,000	58	41 1/2 x 18 3/4 x 17 5/8"
1125-5-100		3/4"	100	3,000	42	26 3/4 x 18 3/4 x 17 5/8"
1125-5-175		3/4"	175	3,000	50	32 3/4 x 18 3/4 x 17 5/8"
1125-5-200		3/4"	200	3,000	55	38 3/4 x 18 3/4 x 17 5/8"
1125-5-250		3/4"	250	3,000	59	42 3/4 x 18 3/4 x 17 5/8"
1125-6-100		1"	100	3,000	69	44 1/2 x 18 1/2 x 17 5/8"



1175 SERIES

- External fluid path with machined from solid brass 90° full-flow NPT swivel inlet
- Swivel Seals: AFLAS
- Exclusive low profile outlet riser, open drum slot design for flat smooth hose wrap & all welded steel "A" frame construction for superior reel structure

MODEL	MOTOR OPTION	I.D.	FT.	PSI	APRX. LBS.	W x H x L
1175-6-50	Electric Motor Options Available	1"	50	3,000	67	24 1/8 x 26 1/8 x 24"
1175-6-100		1"	100	3,000	70	28 1/8 x 26 1/8 x 24"
1175-6-150		1"	150	3,000	75	32 1/8 x 26 1/8 x 24"
1175-6-200		1"	200	3,000	83	36 5/8 x 26 1/8 x 24"

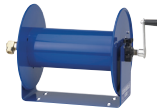
CHOICE OF MOTORS 1125 & 1175



PORTABLE HOSE REEL CART

- Steel round handle detaches for compact storage. Steel front legs with rubber feet prevent sliding.
- High grade ball bearing with hardened cup.
- 1/2" diameter steel axle. Solid 8" rubber tires. For 8" semi-pneumatic tires order model #PRP.

PART NO.	DESCRIPTION	APRX. LBS.
PR-1125-6	Portable Cart to be used with 1125-4-100 & 1125-5-50	17
PR-1125-12	Portable Cart to be used with 1125-4-200	17
PR-1175-11	Portable Cart to be used with 1175-6-100	17
PR-1175-15	Portable Cart to be used with 1176-6-150	17



100 SERIES

- External fluid path with machined from solid brass 90° full-flow NPT swivel inlet
- Swivel Seals: NITRILE
- Solid one piece, heavy gauge steel "U" shaped frame
- Open drum design for no hassle hose wrap

MODEL	I.D.	FT.	PSI	APRX. LBS.	W x H x L
112-3-50	3/8"	50	4,000	15	14 1/2 x 13 x 12"
112-3-100	3/8"	100	4,000	19	18 1/4 x 13 x 12"
112-3-150	3/8"	150	4,000	21	22 3/4 x 13 x 12"
117-3-250	3/8"	250	4,000	30	18 1/4 x 18 x 17"
117-3-400	3/8"	400	4,000	33	22 3/4 x 18 x 17"
117-3-550	3/8"	550	4,000	35	28 1/4 x 18 x 17"
112-4-75	1/2"	75	4,000	21	22 3/4 x 13 x 12"
117-4-225	1/2"	225	4,000	31	22 3/4 x 18 x 17"
117-4-350	1/2"	350	4,000	37	28 1/4 x 18 x 17"
117-5-100	3/4"	100	4,000	35	23 1/4 x 18 x 17"



DM SERIES

- External fluid path with machined from solid brass 90° full-flow NPT swivel inlet
- Swivel Seals: NITRILE
- High quality three piece 1-1/4" steel tube frame structure
- Solid 8" rubber tires for easy transport
- Rubber front feet prevent reel from slipping forward

MODEL	I.D.	FT.	PSI	APRX. LBS.	W x H x L
117-3-200-DM	3/8"	200	4,000	37	19 x 36 1/4 x 21"
117-4-225-DM	1/2"	225	4,000	39	23 1/2 x 36 1/4 x 21"



CM SERIES

- External fluid path with machined from solid brass 90° full-flow NPT swivel inlet
- Swivel Seals: NITRILE
- High quality three piece 1" steel tube frame structure
- Hose Control bar prevents hose from slipping off the discs

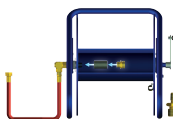
MODEL	I.D.	FT.	PSI	APRX. LBS.	W x H x L
112-3-100-CM	3/8"	100	4,000	18	18 1/2 x 14 3/4 x 13 1/8"
112-3-150-CM	3/8"	150	4,000	22	23 x 14 3/4 x 13 1/8"
117-4-225-CM	1/2"	225	4,000	28	23 x 18 1/2 x 18"



SM SERIES

- External fluid path with machined from solid brass 90° full-flow NPT swivel inlet
- Swivel Seals: VITON®
- Forward-weighted design ensures rotation in direction of use
- Solid one piece, heavy gauge steel frame

MODEL	I.D.	FT.	PSI	APRX. LBS.	W x H x L
SM12-3-100	3/8"	100	4,000	15	19 x 13 1/2 x 12"
SM17-3-250	3/8"	250	4,000	26	19 x 18 1/2 x 17"
SM17-4-125	1/2"	125	4,000	26	19 x 18 1/2 x 17"



GARDEN HOSE KIT

- Able to connect any hose to a reel with 1/2" plumbing
- Fit any garden hose
- Kit includes: NPT to garden hose adaptor & adaptor hose

PART NO.	ACCESSORY	DESCRIPTION
15717	Garden hose kit	Available on 1/2" Plumbing on any reel

This selection only represents a sample of products applicable in this industry. Please visit us online or consult the factory for more product options.